

Model 6368

SOFT SERVE FREEZER

Application

Two Flavor with Twist for third combination flavor. Floor Model, Gravity or Pump Feed Soft Server Freezer with Independent Refrigeration System for Each Cylinder.

Great for all soft serve ice cream, frozen yogurt, custards, gelato and sorbet.

Freezing Cylinder

Two × 1.8 quarts each

Mix Hopper

Two Hoppers at 16.5 quarts each. Mix Agitation is Optional. Separate hopper refrigeration maintains mix temperature below 40°F.

Mix Low Indicator

When mix level is low, the Mix Low light turns “ON” to alert operator to add mix. Compressor shut down setting prevents freeze up or machine damage.

Standby

The standby feature maintains safe product temperature in the mix hoppers and freezing cylinders below 40° during long no-use periods.

Microprocessor Controls

Automatically regulates refrigeration and maintains consistent product quality by controlling product temperature and viscosity. Can be set to go into standby automatically

Counter

Records number of dispenses per day and total number of dispenses.

Temperature Display

Displays hopper and cylinder temperature.

Output

200 servings per hour. (Serving size 4 ounces by weight)

Safety Protections

- Low temperature sensors and motor overload circuit switch will protect the cylinder from over freezing
- High pressure switch prevents compressor overheat
- Thermal overload protects from motor overheat



MODEL 6368



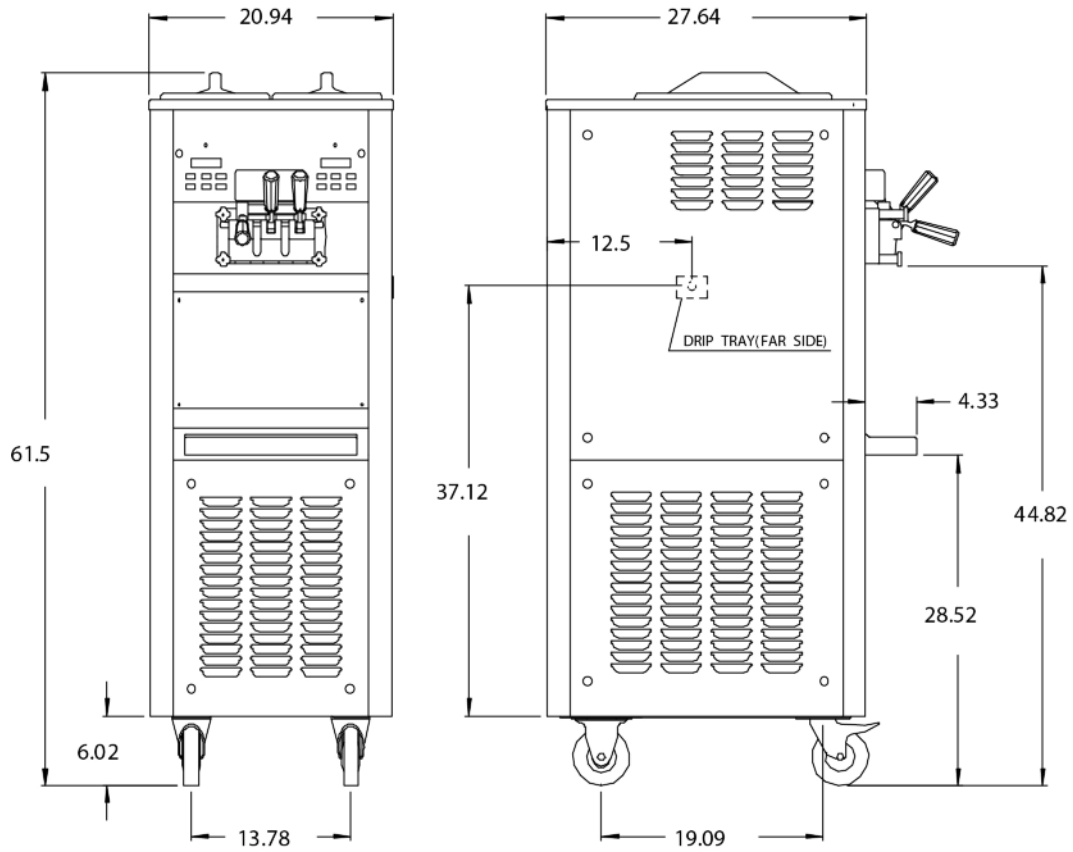
Flexible Blade Beater
Higher capacity, higher overrun



AUTHORIZED DEALER
H&M Company USA, Inc.
 700 Aldo Ave. • Santa Clara, CA 95054
 sales@hmcompanyusa.com
 www.HMCompanyUSA.com

U.S. IMPORTER:
Spaceman International USA, Inc.
 805-927-2257
 info@spacemanusa.com
 www.spacemanusa.com

MODEL 6368



Specifications

Weight	Pounds
Net	461
Shipping	496

Packaging Volume	35 CBF
-------------------------	--------

Dimensions	Net - inches	Shipping - inches
Width	21	27.6
Depth	27.6	31.5
Height	61.5	68.9

Electrical	Fuse Size	Minimum Circuit Amp	Poles (P) Wires(W)
208-230/60/1	30	26	3P/3W
208-230/60/3	30	28	/4W

This unit may be manufactured in other electrical characteristics. Refer to the local Distributor for availability. (For exact electrical information, always refer to the data label of the unit.)

Note

Continuing research results in steady improvements, therefore, these specifications are subject to change without notice.

Electrical

One dedicated electrical connection is required. Unit shall be cord connected or permanently connected. Consult your local Spaceman distributor for receptacle specifications.

Beater Motor

Two @ 1.2 HP for 1 Phase
Two @ 1.0 HP for 3 Phase

Refrigeration System

Main refrigeration:
Two compressors: @ 4400 BTU/hr. R404a

Separate hopper refrigeration (S.H.R.):
One compressor: 480 BTU/hr. R134a

Air Cooled

To ensure adequate cooling, there must be a clearance of 6-inch on each side of this machine. The rear of the machine should have 6-inch clearance from the wall.

Options

Water Cooled.
Optional up air vent available for flush fit on back .
Add 3" to depth.

*Spaceman Factory in China is an:
ISO 9001: 2008 Registered Firm*

Spaceman machines are sold by Distributors in specific territories. Contact the Distributor responsible for your Territory.



For Sales & Service Contact:
H&M Company USA, Inc. (408) 899-9068 | sales@hmcompanyusa.com